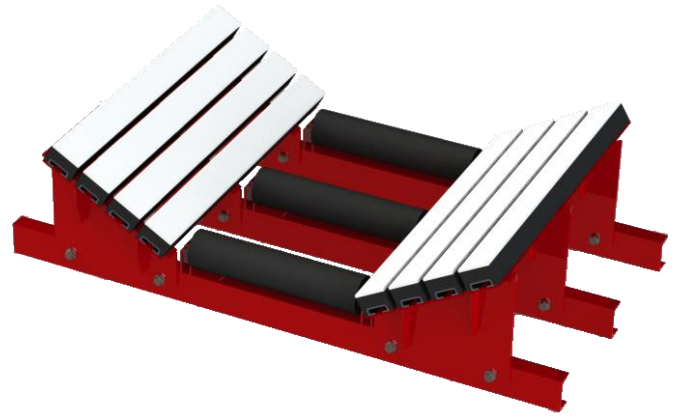


SLIDER BARS

HERCULES SLIDER BARS are installed under the skirt area just after the impact zone to support the belt edge and prevent belt sag thereby providing a plane surface for the skirt seal to act upon. It also helps in stabilizing the loading zone and prevent spillage of material.

Hercules Slider Bar consists of Impact Bars at the wings and rollers at the center, supported by a steel support cradle. The support cradles are suitably designed and fabricated to with stand heavy loads and to facilitate easy installation.

The Pads combines the salient features of UHMWPE like high wear & abrasion resistance and very low coefficient of friction with impact absorption and cushioning properties of Rubber. Pads are reinforced with Aluminium channel for superior strength



SPECIFICATION

- Slider Bars support belt edge and prevent belt sagging.
- Stabilizes the belt path at the transfer point.
- Prevents damage to belt from material getting trapped between idlers and
- T-Bolt fastener system allows quick installation and replacement of Impact Bars.
- Retractable cradle design available on demand. These makes installation and maintenance of the cradles a one-man-job.
- Adjustable wings allow fine adjustments to match the conveyor trough angle.
- Slider Bars are available in standard lengths of 1000mm, 1200mm and 1500mm. Other lengths can be supplied on demand

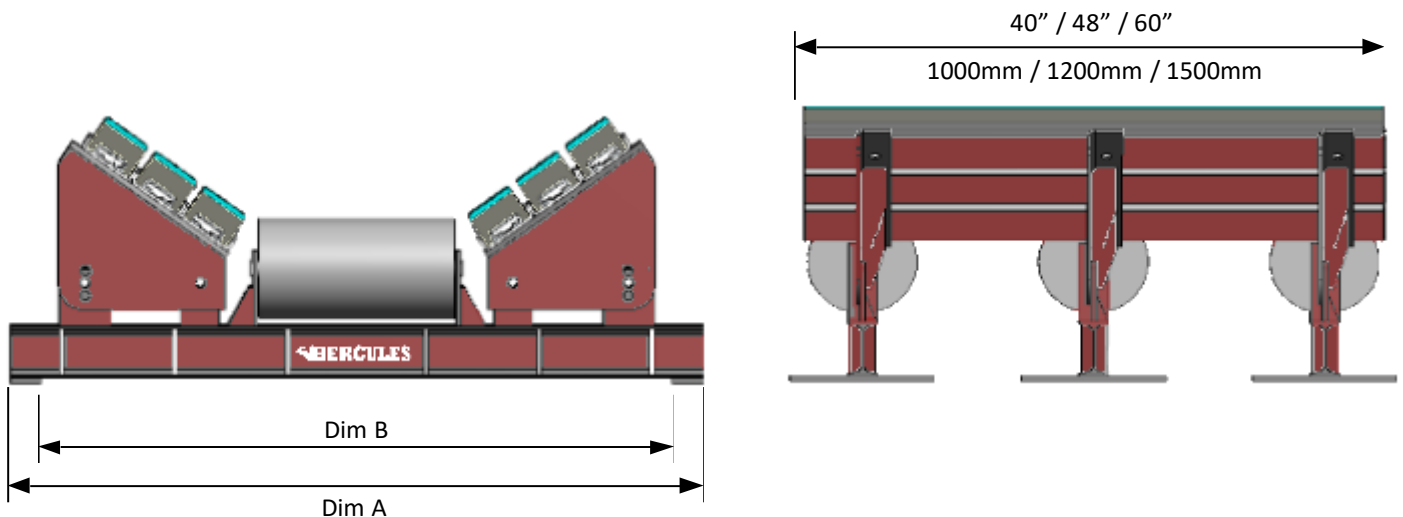
Max Height in. (mm)	2.75 (70)
UHMWPE Hardness	63 +/- Shore D
UHMWPE Thickness in. (mm)	0.4 (10)
Rubber Hardness	65 +/- Shore A
Rubber Thickness in. (mm)	2.6 (65)

Note: Center rollers are optional and usually not part of the supply. Standard rollers available at site can be used. In case rollers are to be supplied by Thejo, please contact our representative.

DIMENSIONS

Belt Width- in. (mm)	Assembly P/N*	No of Pads	Frame Length DIM C - in. (mm)	Fixing Length DIM B - in. (mm)
18 (400-500)	TSB-0500-XX-X	4	32 (820)	30 (750)
24 (500-650)	TSB-0650-XX-X	4	36 (920)	34 (850)
30 (650-800)	TSB-0800-XX-X	4	44 (1110)	42 (1040)
36 (800-1000)	TSB-1000-XX-X	6	54 (1370)	52 (1300)
42 (1000-1200)	TSB-1200-XX-X	6	60 (1545)	58 (1475)
48 (1200-1400)	TSB-1400-XX-X	8	70 (1770)	68 (1700)
54 (1400-1600)	TSB-1600-XX-X	10	78 (1970)	76 (1900)
60 (1600-1800)	TSB-1800-XX-X	10	86 (2170)	84 (2100)
72 (1800-2000)	TSB-2000-XX-X	12	94 (2370)	92 (2300)

* Replace XX with Pad Length code (Refer Table 3)
Replace X with R to include center roller in the supply, else leave blank.



ACCESSORIES & SPARES

THEJO offers a complete package including design, supply, consultancy, technical support, service back-up and maintenance to assure that our clients will obtain the best benefits at the lowest cost for any trouble shooting and improvement needed in the plant.

* For more information please contact your nearest Thejo representative.

Item	Length -in. (mm)	Selection Code	Part No
Spare Roller	TSB-SP-IR-XXXX (Replace XXXX with belt width)		
Spare Pad	40 (1000)	10	THP-SP-IP-10
Spare Pad	48 (1200)	12	THP-SP-IP-12
Spare Pad	60 (1500)	15	THP-SP-IP-15
T Bolt	M16 x 50, T-Head 50mm x 55mm		TEL-FST-T1650