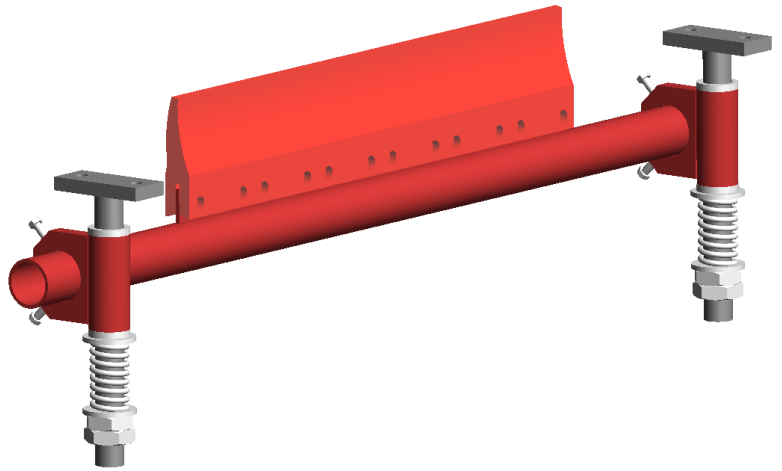


CONDOR-PU®

CONVEYOR BELT CLEANER

CONDOR – PU is a belt cleaner having segmented urethane blade usually installed in the secondary position. When used in conjunction with a primary scraper, it removes up to 95% of material clinging to the belt surfaces. It can be used as a primary cleaner in applications where installation of primary is not possible on the head pulley.

Condor-PU consist of multiple specially designed Polyurethane Blades. A spring tensioner maintain cleaning pressure. The flexible PU blades deflect to allow splices to pass and allow for reversal of belt direction without damage to belt.



SALIENT FEATURES

- Flexible urethane blades deflect to allow splices to pass through.
- Can be used as a primary or secondary depending on the application requirement.
- Can accommodate reversing belts.
- Multiple blade arrangement allows blades to conform the belt profile, especially when worn out.
- Effective belt cleaning reduces plant clean up chores and increase life of conveyor systems.
- Maintenance friendly Spring Tensioner ensures optimal cleaning pressure regardless of blade wear.

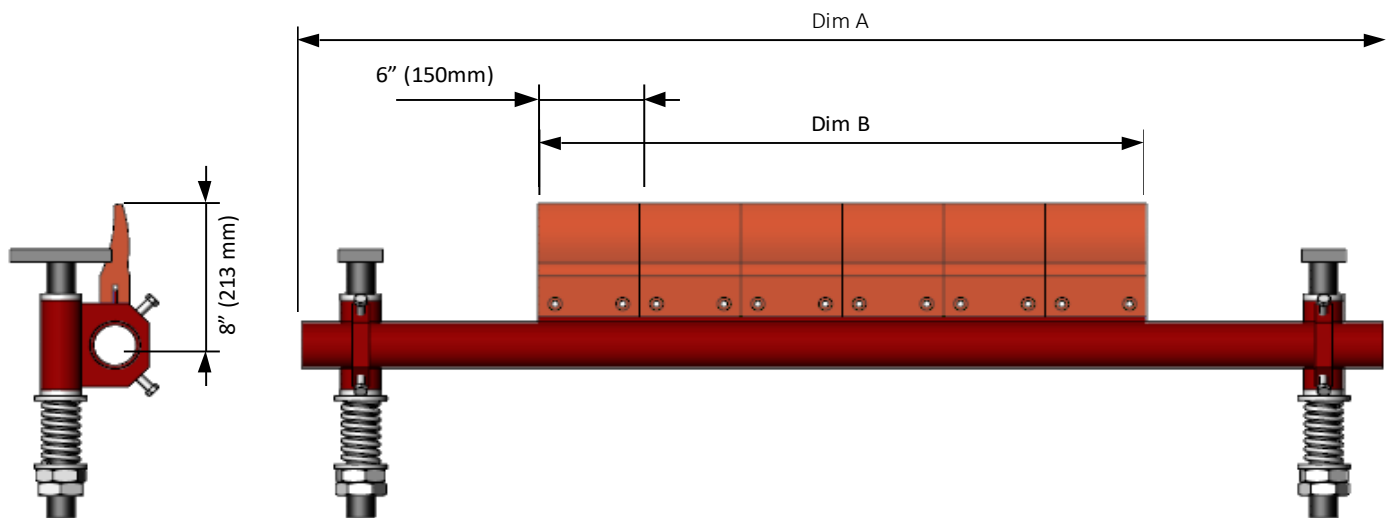
SPECIFICATION

Blade Type	Polyurethane
Maximum Service Temp.(°C)	Continuous - 125 ° Intermittent - 150 °
Maximum Belt Speed (M/s)	4.6
Blade Thickness (mm)	45 mm (Max) 13 mm (Min)
Blade Width (mm)	150 mm

DIMENSIONS

Belt Width in. (mm)	Assembly P/N*	Dim A in. (mm)	Dim B in. (mm)	No. of Blades
18 (400-500)	TCS-PD-0500-X-PU-XX	50 (1250)	18 (450)	3
24 (500-650)	TCS-PD-0650-X-XX-PU	56 (1450)	24 (600)	4
30 (650-800)	TCS-PD-0800-X-XX-PU	68 (1750)	30 (750)	5
36 (800-1000)	TCS-PD-1000-X-XX-PU	72 (1800)	36 (900)	6
42 (1000-1200)	TCS-PD-1200-X-XX-PU	78 (1950)	42 (1050)	7
48 (1200-1400)	TCS-PD-1400-X-XX-PU	84 (2150)	48 (1200)	8
54 (1400-1600)	TCS-PD-1600-X-XX-PU	96 (2450)	60 (1500)	10
60 (1600-1800)	TCS-PD-1800-X-XX-PU	102 (2600)	64 (1650)	11
72 (1800-2000)	TCS-PD-2000-X-XX-PU	108 (2750)	72 (1800)	12
84 (2000-2200)	TCS-PD-2200-X-XX-PU	116 (2950)	78 (1950)	13
96 (2200-2400)	TCS-PD-2400-X-XX-PU	124 (3150)	84 (2100)	14

* Replace 1st X with N if operating temperature is <70° C & H if operating temperature is <70° C,
Replace XX with TS for 'T' Type tensioner and CS for 'C' Type tensioner, SD for standard mounting bracket (with out spring)



ACCESSORIES & SPARES

Thejo provides a range of accessories for easy installation and maintenance of belt cleaners. They include mounting brackets, inspection doors, tensioning devices etc. Custom made brackets and fittings are also available for specific applications.

Spare Blade	TCS-PD-SP-X-PU
Mounting Bracket	TCS-SD-MB (standard bracket with out spring)
Inspection Door	TEL-BC-ID-XX-XX
Tensioner	TCS-PU-SP-TS (T-Type) TCS-PU-SP-CS (C-Type)

* For more information please contact your nearest Thejo representative.